



## PORT OOSTENDE

Port Oostende is situated in Europe's busiest maritime area 51°14' N - 2° 56' E.

This versatile short sea port accommodates all types of coastal maritime traffic:

- > offshore installation & service vessels
- > RORO
- > bulk
- > project cargo
- > cruises

Port Oostende focuses on continuity, growth and employment within five pillars: 'Blue Economy', 'Lift-on Lift-off, Bulk & Projectcargo', 'Cruises & Roll-on Roll-off', 'Circular Industry' and the 'Fishery Sector'.

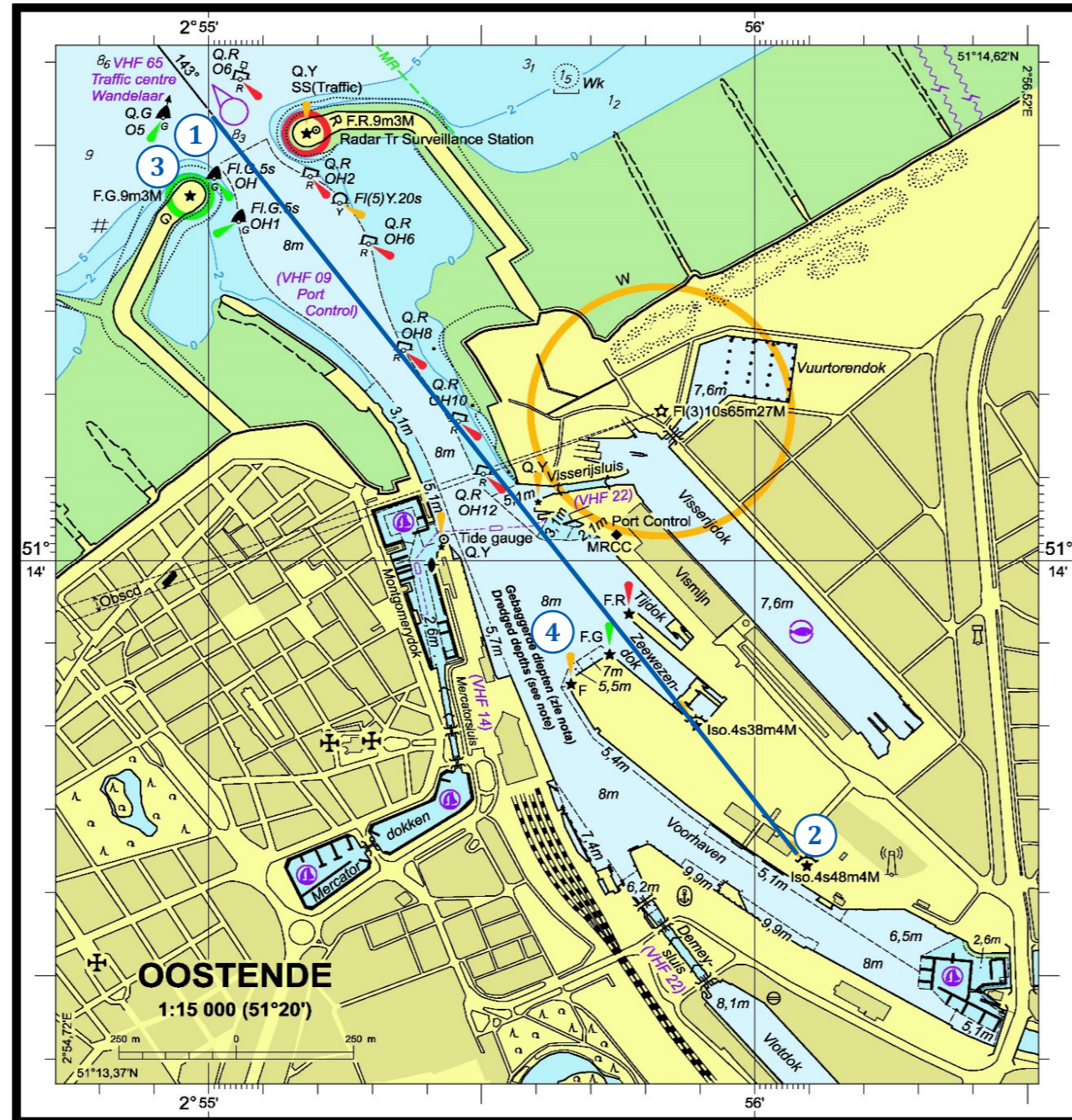
These sectors are further expanded on the basis of **two foundations**: prioritising safety, health and environment and second supporting innovation, research and development.

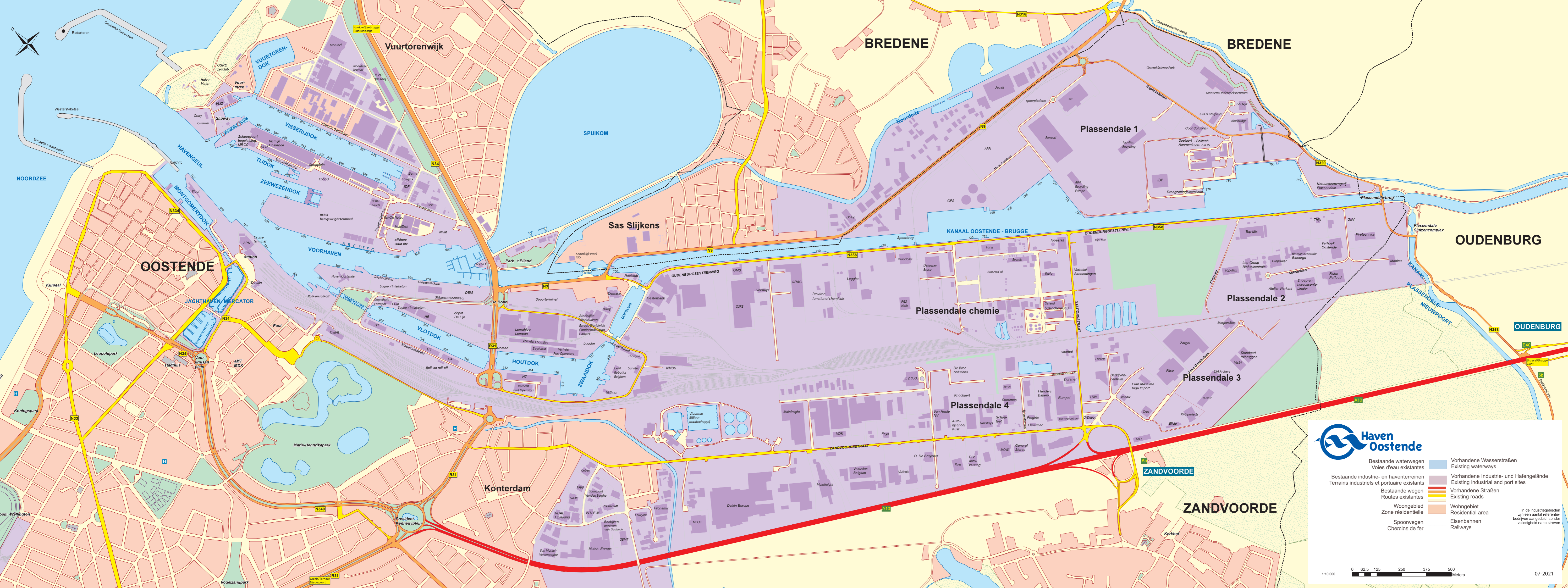
### Port Oostende

Slijkensesteenweg 2, BE - 8400 Oostende  
[www.portofoostende.be](http://www.portofoostende.be) | [info@portofoostende.be](mailto:info@portofoostende.be)

## APPROACH FROM OPEN SEA TO PORT BY LEADING LIGHTS

- 1-2 Alignment 143° indicated by leading lights
3. Access of vessels up to 200 m length  
Entrance = 130 m wide at -8 m LAT
4. A turning basin with a diameter of 300 m





**Haven Oostende**

Bestaande waterwegen Voies d'eau existantes	Bestaande industrie- en haventerreinen Terrains industriels et portuaires existants	Bestaande wegen Routes existantes	Woongebied Zone résidentielle	Spoorwegen Chemins de fer	<ul style="list-style-type: none"> <li>Bestaande Wasserstraßen Existing waterways</li> <li>Bestaande Industrie- und Hafengelände Existing industrial and port sites</li> <li>Bestaande Straßen Existing roads</li> <li>Wohngbiet Residential area</li> <li>Eisenbahnen Railways</li> </ul>
--	--	--------------------------------------	----------------------------------	------------------------------	--

In de industriegebieden zijn een aantal referentiebedrijven aangeduid, zonder volledigheid na te streven

1:10.000      0 62,5 125 250 375 500 Meters      07-2021